



# BOND PROGRAM

## *project updates*

OCTOBER 2024





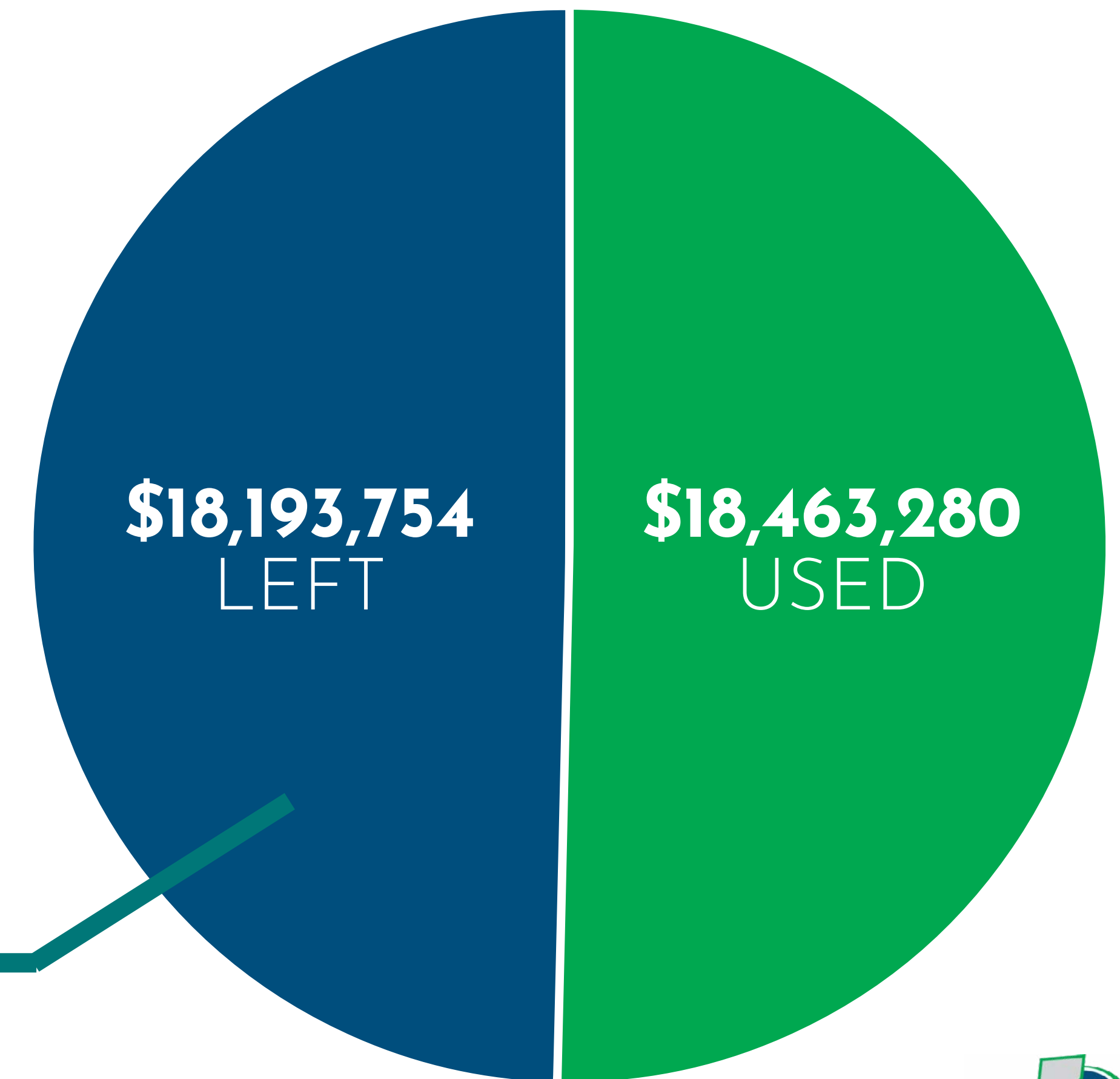
# FINANCIAL UPDATE

## BOND DOLLARS

TOTAL BOND: **\$44,840,000**

TOTAL CONSTRUCTION: **\$36,657,034**

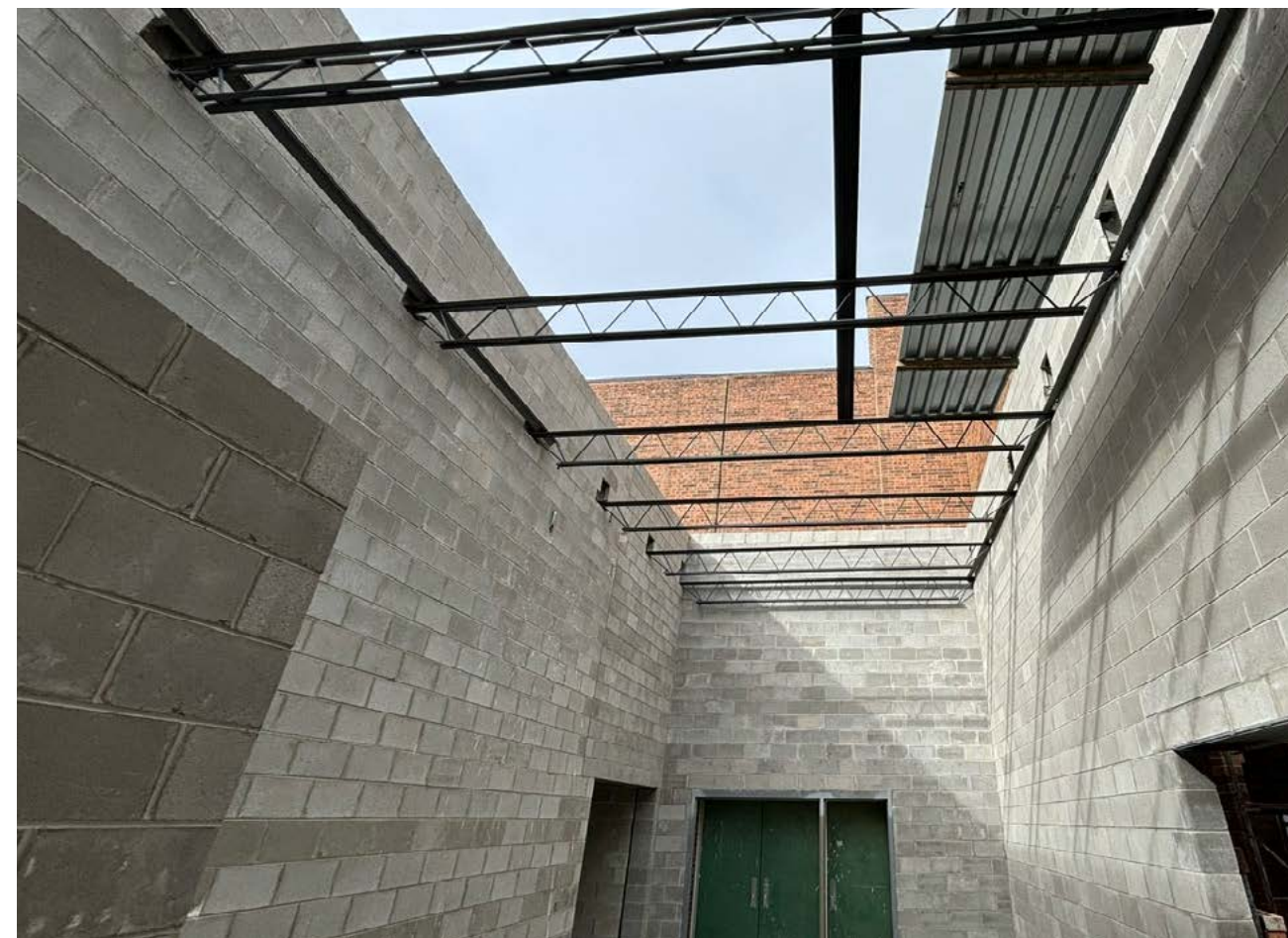
UPCOMING BID PACK ESTIMATE: **\$11,500,000**





# summer update HIGH SCHOOL ADDITION

grand  
opening  
**JULY**  
**2025**





# summer update ELEMENTARY SCHOOL ADDITIONS

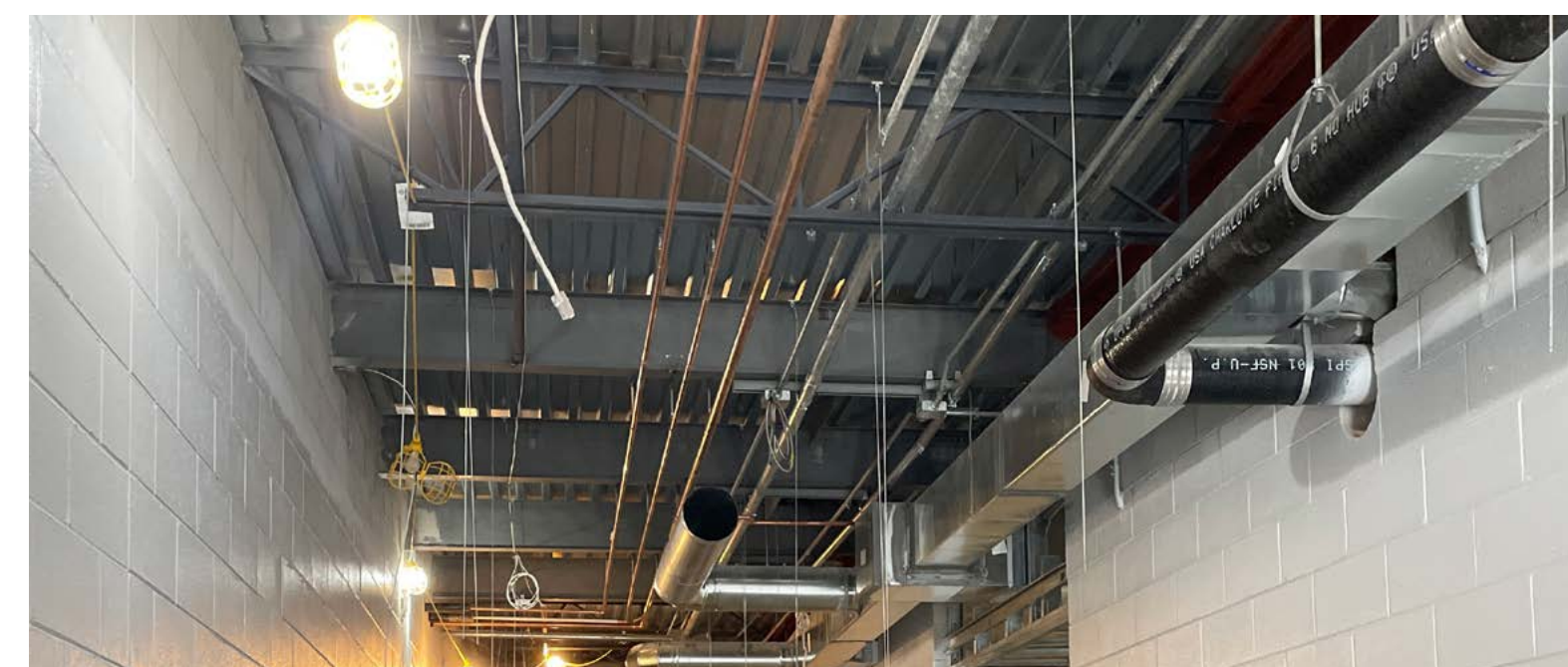
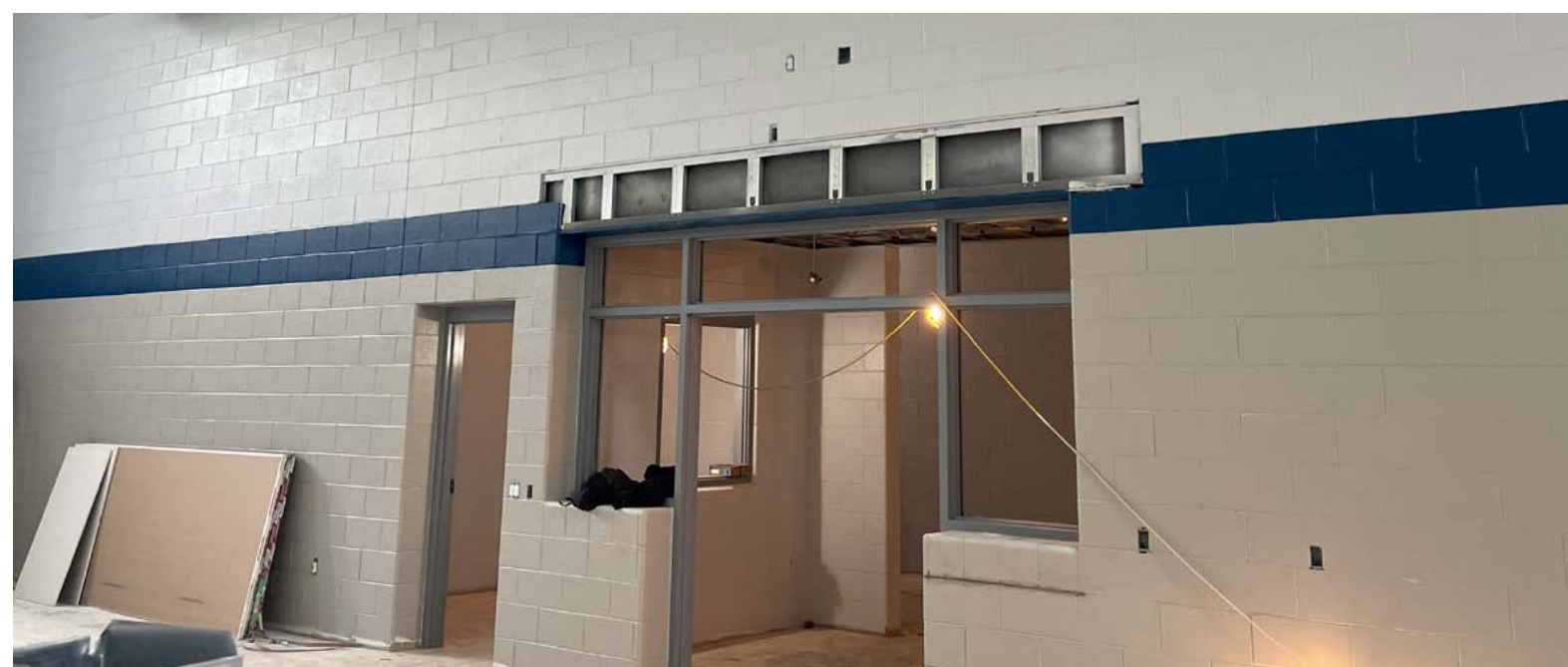
**MURPHY  
ELEMENTARY**

.....

**SCHICKLER  
ELEMENTARY**

.....

**TURRILL  
ELEMENTARY**







# summer update

## ELEMENTARY SCHOOL ADDITIONS



**AUG  
2024**

Complete exterior  
brick

Complete roof  
installation

Start first coat of  
painting



**SEPT  
2024**

Finish first coat  
of paint

RTU Installation

Ceiling grid installation

Start exterior door  
installation



**OCT  
2024**

Final coat of paint

Gym equipment install

Doors / hardware  
installation

Flooring installation

*grand  
opening*





# summer update HVAC @ ELEMENTARY SCHOOLS



## LYNCH ELEMENTARY

2 – Multi-Zone Units  
2 – Roof Top Units  
6 – Vertical Unit  
Ventilators



## MURPHY ELEMENTARY

3 – Roof Top Units



## SCHICKLER ELEMENTARY

3 – Roof Top Units  
15 – Vertical Unit  
Ventilators  
2 – Horizontal Unit  
Ventilators

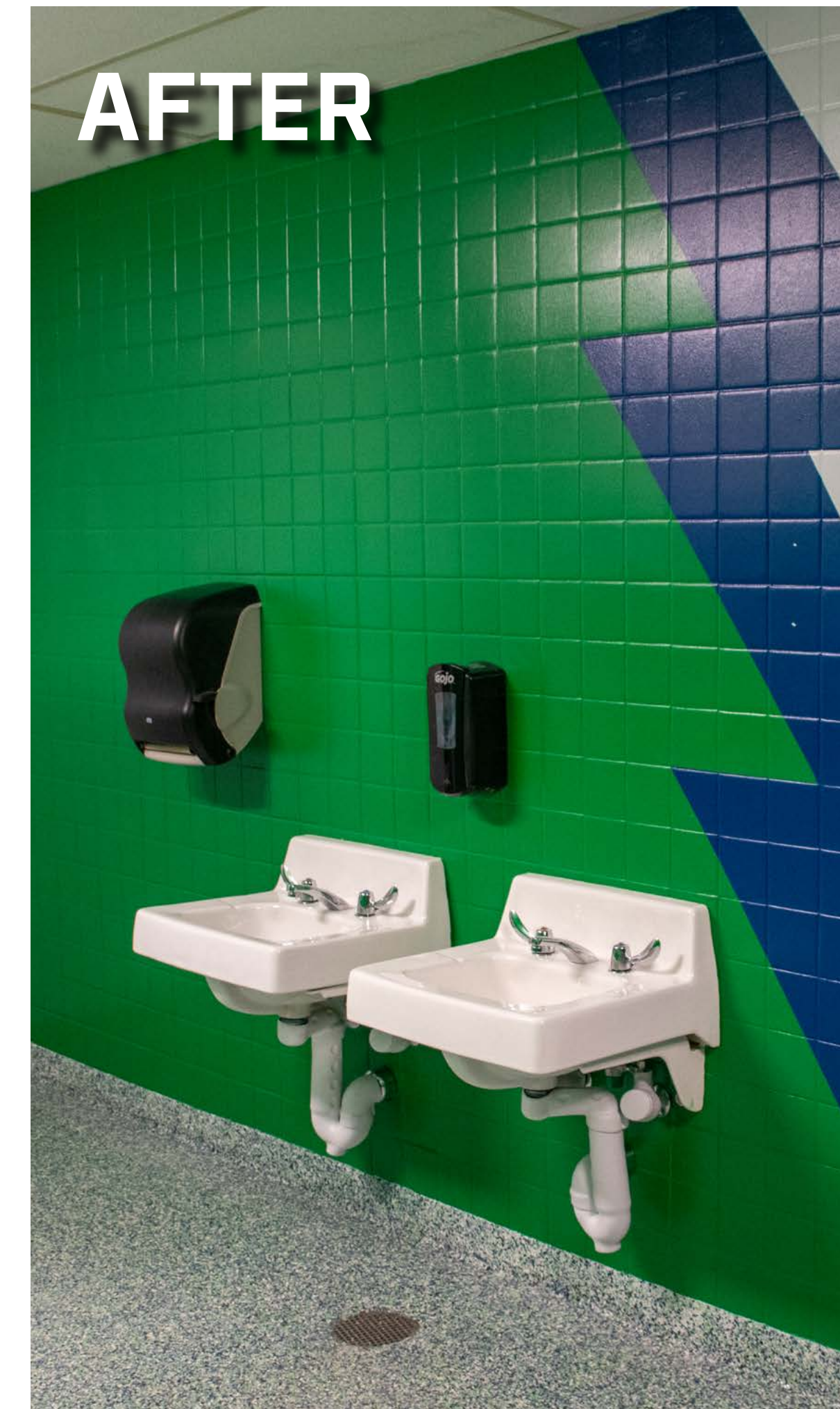
## TURRILL ELEMENTARY

3 – Roof Top Units  
27 – Vertical Unit  
Ventilators





# summer update ELEMENTARY SCHOOL BATHROOM RENO





# summer update LAPEER BUS GARAGE







# UPCOMING PROJECTS



coming soon

**NEW PAC ENTRANCE**  
STARTING 2025

summer 2025



**SCHICKLER DRIVEWAY  
REPAVING**



**INTERIOR HIGH SCHOOL  
RENOVATIONS**



**ROLLAND-WARNER  
PLAYGROUND**







# UPCOMING PROJECTS

COMPLETE BY  
**2025-2026**  
SCHOOL YEAR

HS SCIENCE LAB  
ADDITIONS

ROLLAND-WARNER  
PLAYGROUND

START BY  
**2025-2026**  
SCHOOL YEAR

GRADE  
RECONFIGURATIONS







**LAPEER**

**COMMUNITY SCHOOLS**

*Home of the Lightning*

*open discussion*